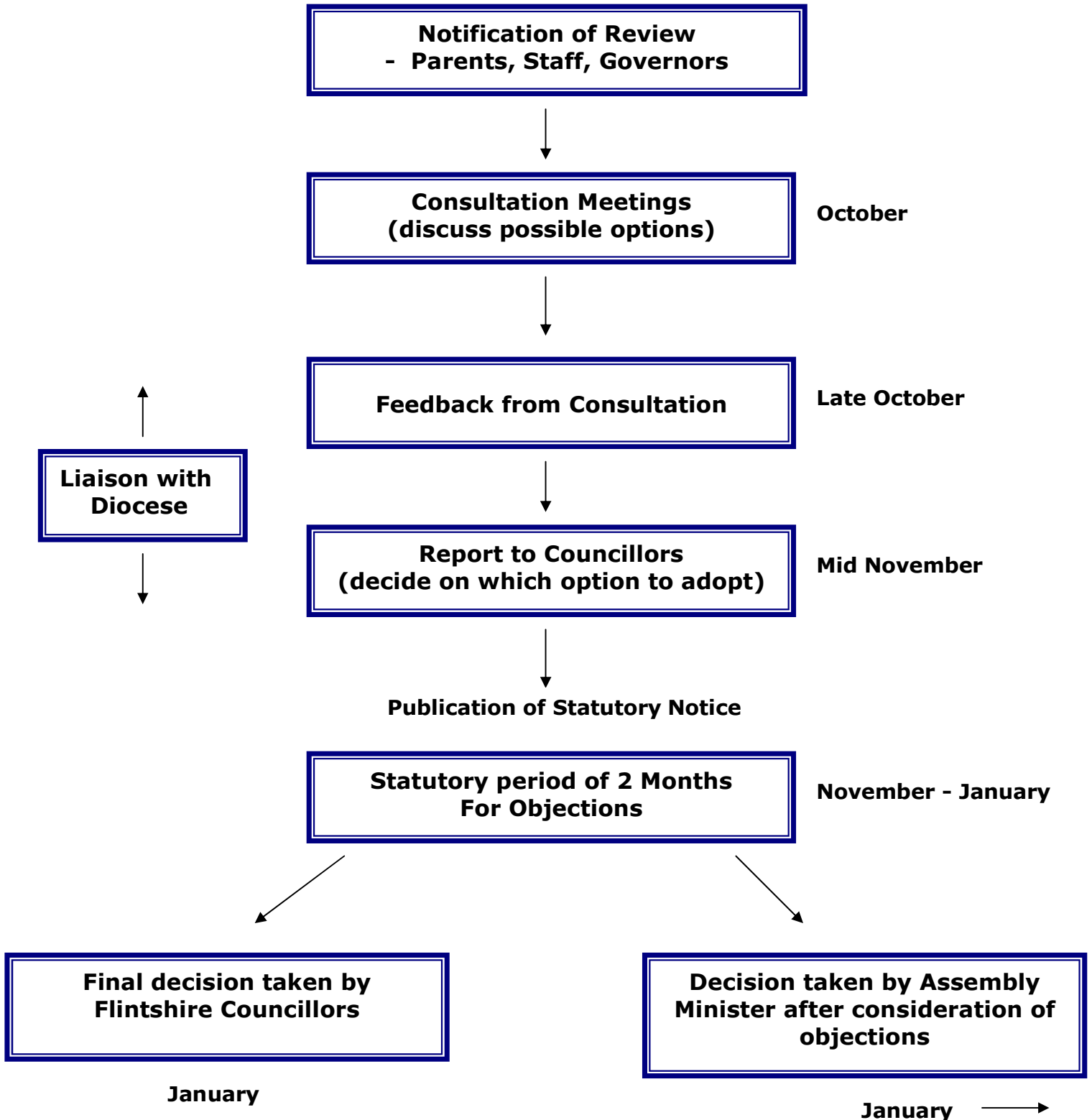



**School Review – Rhesycae**

**Timeline of Events**





## School Modernisation Strategy

---

Review of Rhesycae School  
Consultation: October 2010

---

---


---

---

---

---

---



## The rationale for review

---

- ❑ School modernisation strategy agreed by Flintshire Council in 2009
- ❑ Review of schools which have significant surplus places and have fewer than 15 in KS1 and/or 20 in KS2 over a period of 3 years in succession

---

---


---

---

---

---

---



## The present situation

---

- ❑ Currently 17 f/t pupils on role (4 in year 6)
- ❑ Costs per pupil are £7635 per annum (Flintshire average is £3200)
- ❑ Current Surplus places are 72%

---

---

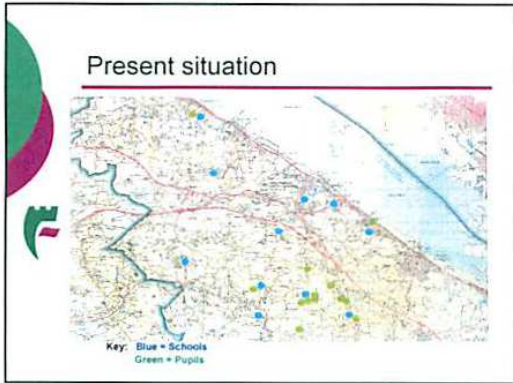
---

---

---

---

---




---

---

---

---

---

---

---

---

- 
- Options for consideration**
- Do nothing
  - Consider amalgamation with another school
  - Consider federation with another school
  - Consider closing the school and accommodating the children in other schools

---

---

---

---

---

---

---

---

**Consideration of the possible options**

Do nothing – the present is not sustainable

Amalgamation – this would not increase the numbers on role at the school

Federation – this would not address the numbers on role or the cost issues as above

Closure – obvious issues associated with a loss of the school

---

---

---


---

---

---

---

---



### The future

- ❑ **What could be done to address the issues if Rhesycae school was to close?**
- ❑ A need to ensure that the alternative education provision is of a high standard and of the ethos requested by parents
- ❑ Support for parents in selecting alternative schools
- ❑ Minimising disruption through integration of pupils into a new school at the end of the summer term
- ❑ Providing transport under the County policy
- ❑ Support for members of staff

---

---

---


---

---

---

---

---



### The next steps

- ❑ Two weeks for any written response to the consultation to be returned to the Authority
- ❑ Report to the Executive Board of the Council for their decision on which option is to be implemented (mid November)
- ❑ Statutory notices published for formal objections to a proposal (two month period, ending in mid January)
- ❑ If objections are lodged, final decision taken by the Minister at the Welsh Assembly

---

---

---

---

---

---

---

---

# Rhesycae School

## CONSULTATION MEETING MONDAY, 18<sup>TH</sup> OCTOBER 2010

In accordance with the policy of the County Council, the school is subject to review.

Your views are important and will be taken into consideration by members of the Executive Board of the Council before they decide on the next steps.

You can make your views known at the meeting or by returning this sheet with your comments: -

Name .....

Address .....

.....

.....

Parent/Governor/Staff member (please delete as appropriate)

### Your comments relating to the consultation:

.....

.....

.....

.....

.....

Please continue on the back of the form if necessary.

Send your completed forms by Monday, 1<sup>st</sup> November 2010 to:

**Tom Davies**  
**Lifelong Learning Directorate**  
**County Hall**  
**Mold**  
**CH7 6ND**

OR leave at the school with the Headteacher for return.

